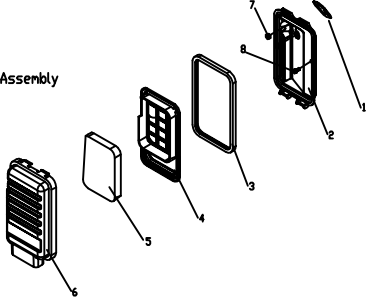


KG390GETI-01000 Engine Block Assembly

Ref	P/N	Description	Qty
1	GB/15789-1986	Bolt M6X30	7
2	GB/T276-1994	Rolling Bearing 6202	2
3	KG340-01003	Crankcase Cover Gasket	1
4	GB/T276-1994	Rolling Bearing 6207	1
5	KG160-01011	Crankcase Cover Location Pin	2
6	KN168F-10008	Oil Drain Plug Gasket	2
7	KG240-01007	Oil Drain Plug	2
8	KG340-01017	Oil Seal	2
9	KG390GETI-01021	Seal Gasket	1
10	KG390-01004	Cylinder Head Gasket	1
11	KG240-01003	Cylinder Head Bolt	4
12	KG240-01012	Cylinder Head Location Pin	2
13	KG390GETI-01001	Engine Block	1
14	KG205GETI-01015	Oil Level Gauge	1
15	KG160-01016	Oil Level Gauge Gasket	1
16	KG390GETI-01006	Crankcase Cover	1
17	GB/15789-1986	Bolt M6X12	2
18	KG390GETI-01022	wire pressing plate	1

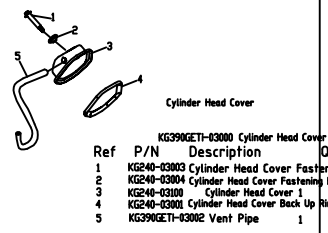
KG390GETI-01000 Engine Block Assembly

Ref	P/N	Description	Qty
16-1	KG390GETI-01006	Crankcase Cover	1
19	KG390GETI-01023	Closed End Face Cover	1



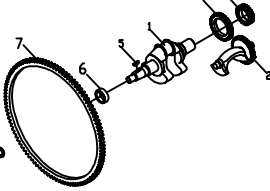
KG390GETI-b-07000 Air Intake System

Ref	P/N	Description	Qty
1	KG240-07004	Carburetor Back Up Ring	1
2	KG390GETI-b-07200	Air Filter Shell	1
3	KG390GETI-07004	Seal Gasket	1
4	KG390GETI-07003	Filter Element Fixing Bracket	1
5	KG240-07002	Filter Element	1
6	KG390GETI-07002	Air Filter Cover	1
7	GB/T61771-2000	Nut M6	2
8	GB/15789-1986	Bolt M6x12	1



KG390GETI-03000 Cylinder Head Cover

Ref	P/N	Description	Qty
1	KG240-03003	Cylinder Head Cover Fastening Bolt	1
2	KG240-03004	Cylinder Head Cover Fastening Bolt Back Up Ring	1
3	KG240-03100	Cylinder Head Cover	1
4	KG240-03001	Cylinder Head Cover Back Up Ring	1
5	KG390GETI-03002	Vent Pipe	1



KG390GETI-05000 Crankshaft & Flywheel Assembly

Ref	P/N	Description	Qty
1	KG390GETI-05001	Crankshaft	1
2	KG340-05005	Balance Shaft	1
3	KG340-05002	Crankshaft Timing Gear	1
4	KG340-05003	Balance Shaft Driving Gear	1
5	GB/T1096-2003	Key 5x6	1
6	GB/T276-1994	Rolling Bearing 6207	1
7	KN168F-KG211-05102	Flywheel Tooth Ring	1
8	KN168F-05002	Flywheel Nut	1
9	KN168F-05003	Flywheel Nut Back Up Ring	1



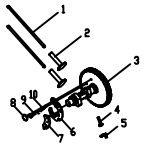
KG390GETI-11000 Speed Control & Steering System

Ref	P/N	Description	Qty
1	KG390GETI-11000	Speed Control & Steering System	1



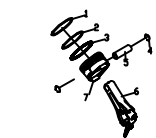
KG390GETI-14000 Ignition System

Ref	P/N	Description	Qty
1	GB/T430-1999	Spark Plug WR1DC	1
2	GB/15789-1986	Bolt M6x16	2
3	KG240-14300	Oil Alert	1
4	GB/T61771-2000	Nut M10	1



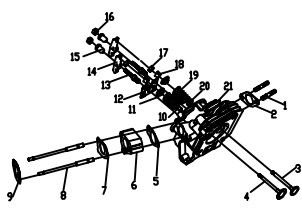
KG390-06000 Camshaft Assembly

Ref	P/N	Description	Qty
1	KG340-06002	Valve Push Rod	2
2	KG240-06001	Valve Tappet	2
3	KG290-06100	Camshaft	1
4	KG240-06106	Pin, Gearshift Fork	1
5	KG240-06107	Gearshift Fork	1
6	KG240-06101	Swinging Arm	1
7	KG240-06105	Pressure Regulators Centrifugal Block	1
8	KG240-06104	Swinging Arm Pin	1
9	KG240-06102	Pressure Reducing Spring Pin	1
10	KG160-06103	Extension Spring	1



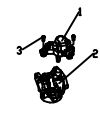
KG390-04000 Piston & Connecting Rod Assembly

Ref	P/N	Description	Qty
1	KG290-04001	1st Compression Ring	1
2	KG290-04002	2nd Compression Ring	1
3	KG290-04100	Oil Ring	1
4	KG240-04005	Retaining Ring	2
5	KG240-04004	Piston Pin	1
6	KG240-04200	Connecting Rod	1
7	KG290-04003	Piston	1



Cylinder Head Assembly
KG390GETI-02000

序号	代号	名称	数量
1	KG240-02017	Exhaust Pipe Stud	2
2	KG240-02015	Exhaust Pipe Gasket	1
3	KG670-02005	Exhaust Valve	1
4	KG670-02004	Intake Valve	1
5	KG240-02014	Intake Pipe Gasket	1
6	KG390GETI-02017	Carburetor Insulation Block	1
7	KG340-02021	Carburetor Gasket A	1
8	KG240-02016	Intake Pipe Stud	2
9	KG390GETI-02023	Carburetor Gasket B	1
10	KG240-02012	Intake Valve Guiding Pipe Oil Seal	1
11	KG168F-02002a	Valve Spring Seat	1
12	KG240-02011	Push Rod Guiding Plate	1
13	KG670-02007	Rocker Arm Shaft Bolt	2
14	KG670-02009	Valve Rocker Arm	2
15	KG160-02008	Rocker Arm Shaft	2
16	KG160-02016	Rocker Arm Shaft Adjusting Bolt	2
17	KG670-02003	Valve Adjusting Gasket Block	2
18	KG670-02001	Valve Cotter	2
19	KG240-02006	Valve Spring	2
20	KG240-02013	Exhaust Valve Spring Bottom Seat	1
21	KG240-02100	Cylinder Head Mechanism Part	1



KG390GETI-10000 Carburetor Assembly

Ref	P/N	Description	Qty
1	KG200GETI-10210	Motor Bracket	1
2	P2741-000	Carburetor	1
3	GB/T823-1988	Screw M4x8	2



KG390GETI-15000 Starter Electrical System

Ref	P/N	Description	Qty
1	GB/15783-2000	Bolt M10x30	2
2	GB/193-1987	Back Up Ring	2
3	GB/1971-2002	Back Up Ring	2
4	KN168FE-15000	Starter Motor	1